

WINQSL

Manfred Meier

Postfach 1269

D-95645 Waldsassen

DF6EX@winqsl.de

Fax: 00499632-915668

WINQSLPOLICY is a 32bit-application and runs under all current Windows-Releases from WIN98 up to VISTA. When you've downloaded the file from the website just open QSLPOLICYSETUP.EXE with a double-click. In the selection-window you can choose if you like the default-setup-directory (which install directly under the WINDOWS program-directory in a sub-directory QSLPOLICY). Of course you can select also an individual installation-directory.

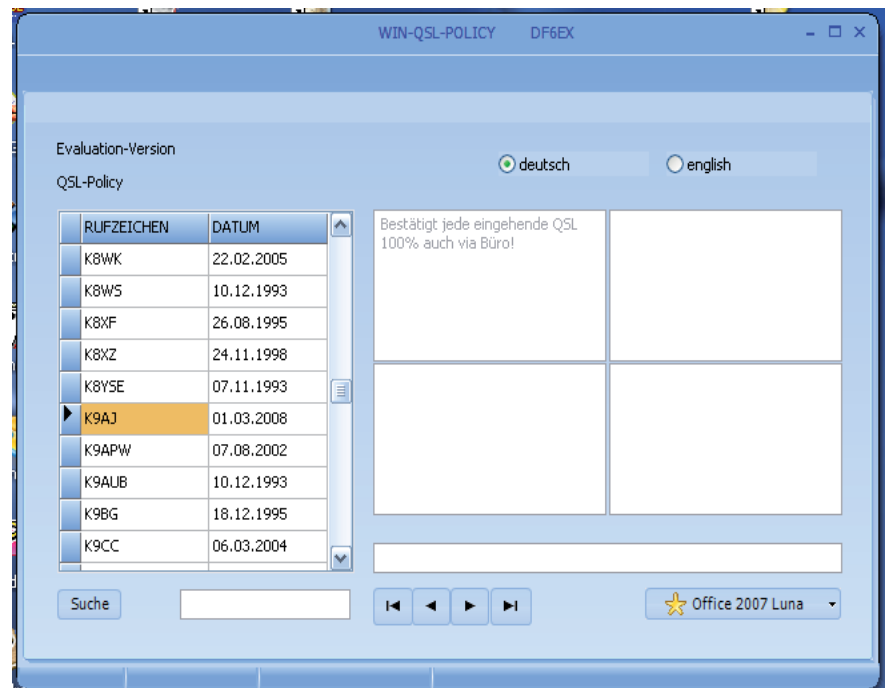
After installation you find a new Icon on your desktop called QSLPOLICY.

After starting the program it appears with the sentence Evaluation-Version in the headline. You can start it up to 100 times but then you have to install a licence-file or the program will no longer work.

Conditions how to get a licence you will find at the homepage: www.winqsl.de

In the database-browser you find

RUFZEICHEN	DATUM
K8WK	22.02.2005
K8WS	10.12.1993
K8XF	26.08.1995
K8XZ	24.11.1998
K8YSE	07.11.1993
K9AJ	01.03.2008
K9APW	07.08.2002
K9AUB	10.12.1993
K9BG	18.12.1995
K9CC	06.03.2004



beside the call a date-field. This date represents when the info was inserted or last time modified.

After the start of QSLPOLICY the cursor remains blinking in the search-field. Just enter the wanted DX-call or manager-call and press the Enter-Button. If a record was found the database moves and display the recorded QSL-policy.

Also when the cursor is in the search-field you can scroll through the database by pressing the arrow-up or arrow-down-key.

Of course you can move also with clicking one of the four arrow-buttons with the mouse to the next/previous/first/last record.

In the comment field are up to 4 different QSL-POLICY-infos for each station possible.

Every "received" card will be answered sure, also via the buro.	

With the style-menu you can choose the optical appearance of the program. There are six different styles available where you can select depending on your Windows-environment.

If you have ordered the licence-file you will receive a file QSL-POLICYREGISTERED.EXE. If you install this the Evaluation-text disappears and your serial will be included in the program.

The file detects your installation-path automatically.

We plan updates for QSLPOLICY in a three-month-period. You will be informed when a new update is available. Some features will be included in next releases. Also here you will get information when news are available.

Rolf Thieme - DL7VEE -
Serial-Nr. 002

	RUFZEICHEN	DATUM	
▶	2E0PRD	31.10.2008	▲ ☰
	2E0VAG	31.08.2008	
	2S2MP	14.05.1999	

Of course it would be interesting to get also your QSL-results to extend the files more and more.

So we hope you will enjoy QSLPOLICY.

Vy 73, Manfred -DF6EX-