

WIN-QSL-Collector 2

WIN-QSL-Collector 2 is a graphical database.

You can store all important data like call, country, IOTA, year in the integrated database. In the notice-field you can enter additional comments.

The QSL-cards can be stored in JPEG-file-format and can be used also later for other applications.

Together with WIN-QSL-Collector 2.0 you get a demo-version with already included 500

QSL-card-images for your tests and a so called private-edition where you can enter your own QSL-card archive.

After the installation you will find two icons on your desktop:

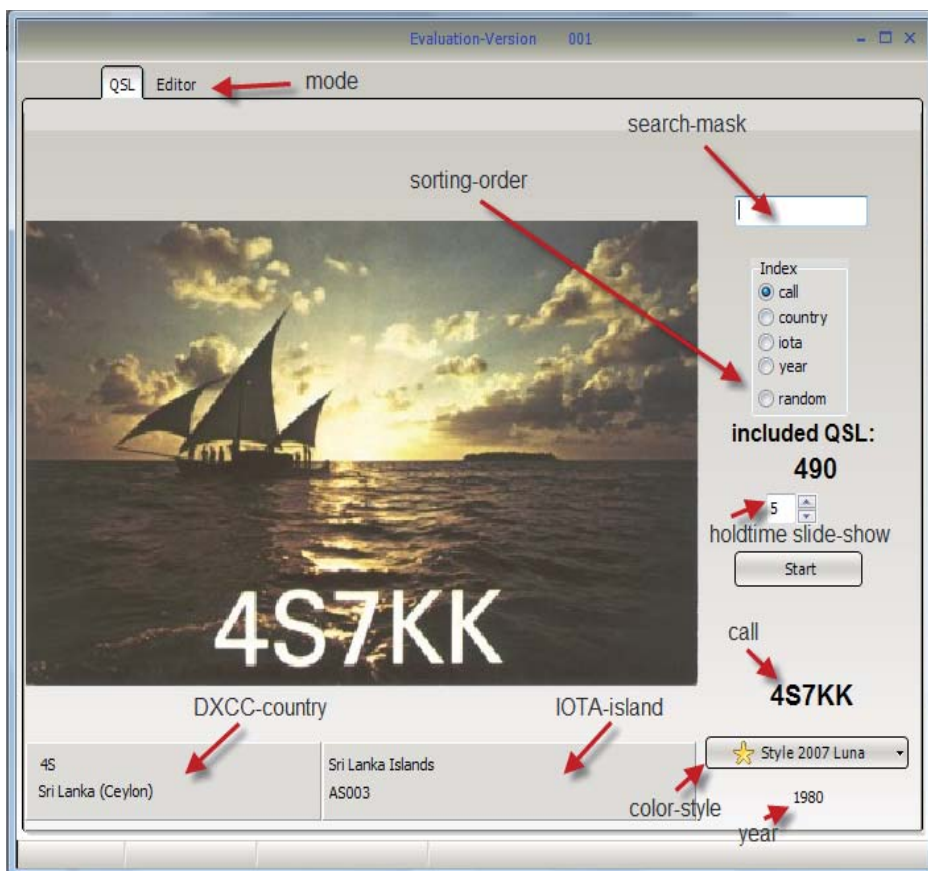
1. QSL-Collector 2.0 - Demo
2. QSL-Collector 2.0 - Private

Both programs can be used by you directly after download and installation. Then you can start both programs for maximal 50 times.

Then the product must be licenced.

As long the programs are in the evaluation-phase you will find the comment „Evaluation-Version“ in the headline. When you got your licence-file you find after installation your call and your serial-number.

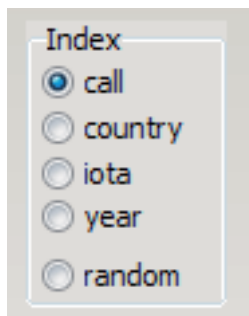
There are two main-mode available. When you press the QSL-mode you are in the normal program-mode where you have a search-field. You find a blinking cursor in this line where you can enter the whole search-call or also only a part of the search-call. Just press the ENTER-key and the program will jump to this record and if not found to



Search-Mask

the record which is nearest to the search-call

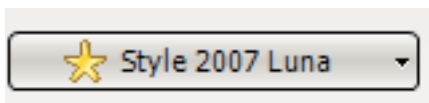
In the index-menu you choose the wanted search-order.



With the selection of call the database will be sorted by calls, country will sort by DXCC-country, IOTA by IOTA-number and year by the year when the QSO was made. When you select the random-function the database will jump in randomized order.

Of course the sorting can be only done correctly if you enter also the required informations when you enter your own records.

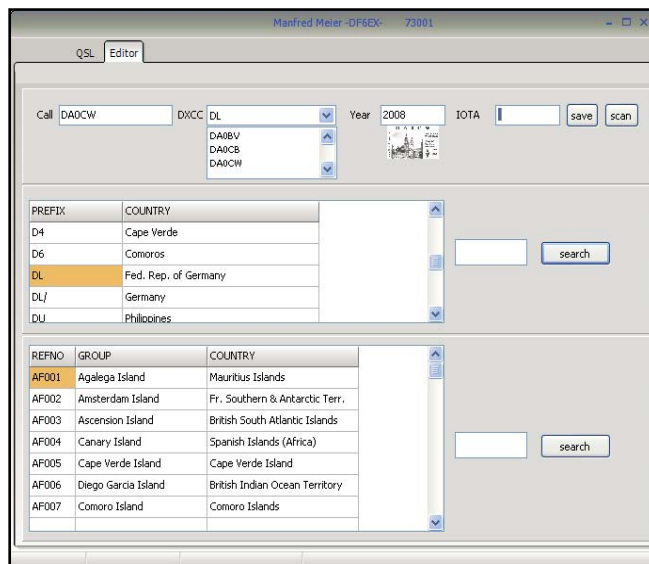
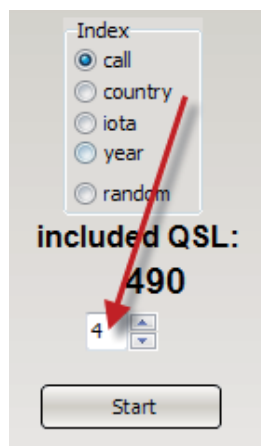
With the button Style you can choose between several pre-defined windows-styles. Select the one which fits best according to your foreground/background color-settings of your monitor and makes the best contrast for you..



When you enter a callsign with portable-prefix, WIN-QSL-Collector 2 will turn the callsign automatically in the internal standard-format. Portable-prefixes will be always appended at the end of the call. So EA6/DF6EX/p will be automatically converted in DF6EX/EA6. Also in the search-mask the conversion will be done automatically, anyway how you enter the call.

The program has an internal slide-show-function. Choose simply the sorting-order, select the wanted holding-time (in seconds) and press the start-button. By pressing stop the slide-show will be stopped.

Slide-Show



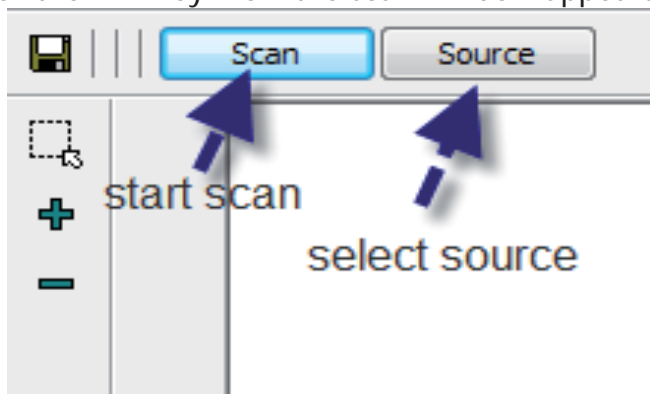
In the Editor you can enter your own QSL-card-archive.

The Editor

In the first field you enter the call, then press the TAB-key, cursor will move into the next field (DXCC). Here you can select the DXCC-country which is represented by the current QSL-card. Collector has an internal DXCC-database. All current countries are included. When pressing the next time the TAB-key the cursor jumps to the year-field where you should enter the year of the QSL-card (often calls are reissued several times, this makes it easier for you to detect from what period the card is).

If there is already a card-image under this call included you will see a miniature-picture from the card under the year-field. When jumping a last time with the TAB-key you will be moved into the iota-field. You must enter the IOTA-number in the format EU001. When you check later your cards you will see that all current IOTAs are also included.

Save now the record by pressing the SAVE-button. (You can do this via mouse-click or alternative if you leave the IOTA-field with TAB automatically the SAVE-button will be selected and by pressing the SPACE-key the SAVE-button will be pressed. This is that you not always need to change between keyboard and mouse). In the next step select the SCAN-button doing the same way either with the mouse or the TAB-key. Now the scan-window appears.

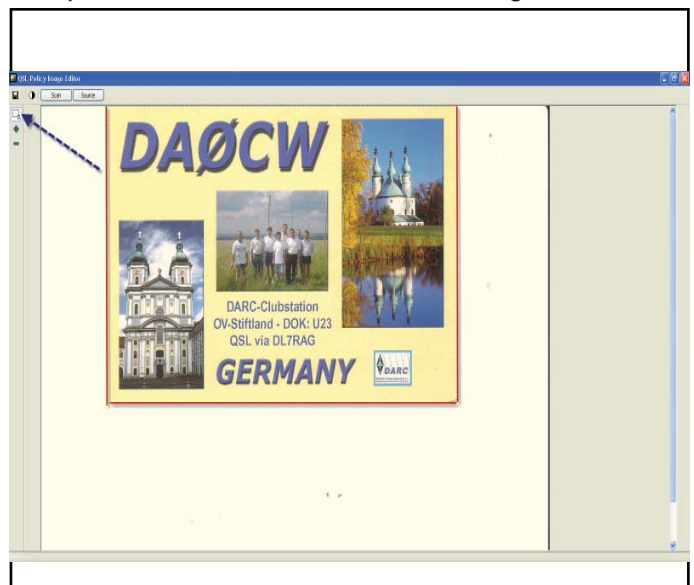


With the button SOURCE you can select the scanner which you like to use. WIN-QSL-COLLECTOR 2 supports only TWAIN-compatible scanner.

With SCAN you start the scan-function. All following settings depend on the scanner-model you use.

Generally you can not use a scan-resolution bigger than 200dpi. If you have an actual scanner-type the quality is good enough also, when you use 100dpi. Of course this decides how large the image you get on your hard-disc. Please make here some test-scans before you make your final decision.

After successful scanning your QSL-card appears on the screen. When you press now the rectangle-tool you can draw a rectangle around the QSL-image from the upper left to the lower right corner, then press again the rectangle button and the selected image appears isolated in the mounting-screen. By pressing now the button with the disc-symbol the picture will be stored according to the



callsign, country-entry you have entered previously. The card-image will be stored in JPEG-format. The filename consists by call and -- plus portable-prefix plus an automatically generated serial-number. For the DXCC- and IOTA-files you will find updates on the homepage. If you used before WIN-QSL-Collector 1 I can convert your previous files into the new format. Just get in contact with me at DF6EX@winqsl.de